

FIRST RECORD OF *CLAUSENIA* ISHII (HYMENOPTERA: ENCYRTIDAE) FROM INDIA WITH DESCRIPTIONS OF TWO NEW SPECIES<sup>1</sup>

S. ADAM SHAFEE

AND

RAJENDRA KUMAR AVASTHI<sup>2</sup>

(With a text-figure)

*Clausenia* Ishii is reported for the first time from India. Two new species (*C. longipennis* sp. nov. and *C. indica* sp. nov.) are described and illustrated. Key to species of *Clausenia* is also provided. Types deposited in Zoological Museum, Aligarh Muslim University, Aligarh, India.

Genus *Clausenia* Ishii

Type-species: *Clausenia purpurea* Ishii, 1923 (by original designation and monotypy).

The genus *Clausenia* was first proposed by Ishii (1923) with *C. purpurea* Ishii as type-species. The generic characters of this genus have been given in detail by Kerrich (1967). Some additional generic characters are suggested which are as follows: Female genitalia, first valvifer (fig. 1 G) semicircular, second valvifers (fig. 1 F) very narrow at apical one-third; subgenital plate (fig. 1 E) with anterior margin concave, anterolateral apodemes long.

The genus *Clausenia* Ishii is reported for the first time from India. Two species are described here as new. Kerrich's (1967) key to species of *Clausenia* Ishii has been revised in order to accommodate *C. indica* sp. nov. and *C. longipennis* sp. nov.

REVISED KEY TO SPECIES OF *Clausenia* ISHII, BASED ON FEMALES

- 1. Abdomen not much shorter than thorax; subgenital plate (=hypopygium) boat-shaped, pointed at apex.....2
- Abdomen much shorter than thorax; subgenital plate (=hypopygium) semitruncated and notched

<sup>1</sup> Accepted October 1981.

<sup>2</sup> Section of Entomology, Department of Zoology, Aligarh Muslim University, Aligarh, India.

- in the middle, scarcely boat-shaped; antennal club with second suture not strongly curved or oblique; frontovertex shining, with reticulate microsculpture very fine and punctation sparse: Africa . . . . . *C. confusor* Kerrich
- 2. Antennae having funicle segments 5 and 6 only a little longer than broad.....3
- Antennae having 6th funicle segment about one and a half times as long as broad and 5th still longer . . . . .5
- 3. Mesoscutum less densely punctate; marginal vein of fore wing almost twice length of stigmal vein; head not dominantly dark green.....4
- Mesoscutum more densely punctate; marginal vein of fore wing only moderately longer than stigmal vein; head usually dominantly dark green: Asia, U.S.A..... *C. purpurea* Ishii
- 4. Postmarginal vein distinctly longer than marginal vein; legs with coxae and trochanters except at apex, and femora except at base and apex, pale blackish brown with weak, mostly purplish, metallic reflections; mesoscutum with setigerous puncts separated by about twice their own diameters: West Africa..... *C. corrugata* Kerrich
- Postmarginal vein distinctly shorter than marginal vein (fig. 1 K); legs orange yellow; mesoscutum with setigerous puncts separated by more than four times their own diameters: India....  
..... *C. indica* sp. nov.
- 5. Fore wings with marginal vein less than twice the length of stigmal vein; eyes moderately setose . . . . .6
- Fore wings with marginal vein almost twice as long as stigmal vein; eyes weakly setose.....7
- 6. Fore wings broad, about twice as long as wide.

NEW DESCRIPTIONS

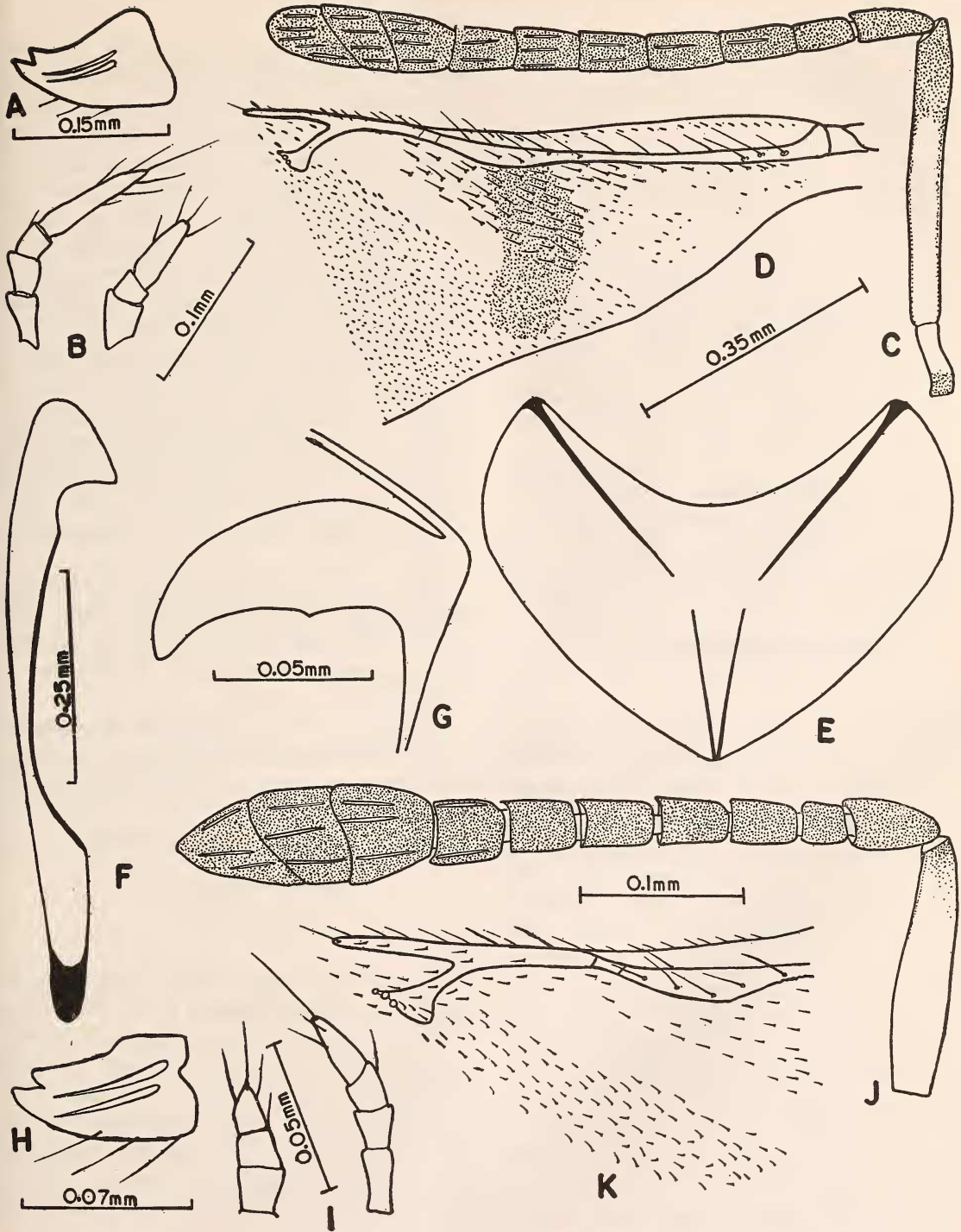


Fig. 1. A-G. *Clausenia longipennis* sp. nov., ♀: A. Mandible; B. Maxillary and labial palpi; C. Antenna; D. Part of fore wing; E. Subgenital plate; F. Second valvifer; G. First valvifer. H-K. *Clausenia indica* sp. nov., ♀: H. Mandible; I. Maxillary and labial palpi; J. Antenna; K. Part of fore wing venation.

disc proximal to speculum with thin setae beneath submarginal vein (Rosen, 1965: fig. 6); antennae with first funicle segment slightly longer than wide (Rosen, 1965: fig. 4): Israel.....

- .....*C. josefi* Rosen
- Fore wings moderately narrow, more than two and a half times longer than wide, disc proximal to speculum with numerous coarse setae beneath submarginal vein (fig. 1 D); antennae with first funicle segment twice as long as wide (fig. 1 C): India.....*C. longipennis* sp. nov.
- 7. Head in side view (Kerrich, 1967: fig. 42) with cheeks not sharply narrowed to mouth; punctures on mesoscutum not very fine, many separated by less than twice their own diameters; hind tibiae usually mainly pale, darkened above, but if more extensively darkened then at least broadly pale at apex: West Africa.....  
.....*C. quineensis* Kerrich
- Head in side view (Kerrich, 1967: fig. 41) with cheeks rather sharply narrowed to mouth; punctures on mesoscutum very fine, mostly separated by well over twice their own diameters; hind tibia only rather narrowly pale at apex: South Africa, Eritrea .....*C. comperiei* Kerrich

***Clausenia longipennis* sp. nov.**

(Fig. 1 A-G)

**FEMALE:**

*Head.*—Dark, slightly wider than long in facial view; antennae inserted below lower level of eyes; space between antennal sockets about one-third width of frons between eyes; malar space shorter than eye width; eyes moderately setose; maxillary and labial palpi (fig. 1B) 4- and 3-segmented respectively; mandibles (fig. 1A) bidentate. Antennae (fig. 1C) dark brown except basal three-fourth of scape orange yellow; scape long and slender, about 8 times as long as wide; pedicel distinctly longer than 1st funicle segment; funicle segment 1st shortest, 2nd and 3rd subequal in length and each about twice as long as wide, 5th and 6th one and a half times as long as wide; club 3-segmented, as long as preceding 3 funicle segments together.

*Thorax.*—Dark brown; mesoscutum coarsely

setose and with distinct parapsidal furrows anteriorly, axillae and scutellum finely setose and reticulately sculptured. Fore wings slightly infuscated, about two and a half times as long as wide; disc proximal to speculum with numerous coarse setae beneath the submarginal vein; submarginal vein slightly widened at apical third; marginal vein slightly longer than post-marginal vein and less than twice the length of stigmal vein (fig. 1D); marginal fringe small, spaced by a distance equal to one-fourth their length. Hind wings hyaline, about five and a half times as long as wide (1.01:0.19 mm); marginal fringe small, spaced by a distance equal to one-fourth their length. Legs dark brown except fore and mid tibiae at apical halves, hind tibiae completely, and tarsi yellowish; middle tibial spur as long as basitarsus.

*Abdomen.*—Dark, slightly longer than thorax; tenth tergum long; paratergites long and narrow; subgenital plate boat-shaped, pointed at apex, reaching beyond apex of abdomen.

*Body length:* 1.6 mm.

*Holotype* ♀. INDIA: Uttar Pradesh, Aligarh, ex. *Coccidohystrix insolitus* (Green), on *Solanum melongena* L., 2. viii. 1977 Coll. S. Adam Shafee.

*Paratypes.* ♀, same data as holotype.

***Clausenia indica* sp. nov.**

(Fig. 1 H-K)

**FEMALE.**

*Head.*—Dark, slightly wider than long in facial view; antennae inserted below lower level of eyes; eyes dark brown and sparsely setose; space between antennal sockets about one-half the width of frons between eyes; maxillary and labial palpi (fig. 1I) 4 and 3-segmented respectively; mandibles (fig. 1H) bidentate. Antennae (fig. 1J) dark except scape orange yellow; scape four and a half times longer than wide,

## NEW DESCRIPTIONS

pedicel about twice the length of first funicle segment, first funicle segment shortest and slightly longer than wide; funicle segments 2-6 subequal in length, 2-4 one and a half times as long as long as wide, 5th slightly longer than wide, 6th as long as wide; club 3-segmented, slightly longer than preceding three funicle segments combined.

*Thorax*.—Dark and reticulately sculptured with setigerous puncts sparsely distributed and separated by more than four times their own diameters; mesoscutum with parasidal furrows as in *C. purpurea* Ishii (Rosen, 1965: fig. 16); axillae triangular, meeting medially. Fore wings hyaline, about two and a half times as long as wide; submarginal vein long, slightly dilated at apical third, marginal vein slightly longer than postmarginal and twice the length of stigmal vein (fig. 1K); marginal fringe small, spaced by a distance equal to one-third their length. Hind wings hyaline about five and a

half times longer than wide; marginal fringe small, spaced by a distance equal to one-fourth their length. Legs uniformly orange yellow; middle tibial spur as long as basitarsus.

*Abdomen*.—Dark brown, as long as thorax; subgenital plate boat-shaped, reaching slightly beyond apex of abdomen.

*Body length*: 1.2 mm.

*Holotype* ♀, INDIA: Tamil Nadu, Coimbatore, ex. *Rastrococcus* sp. on *Acacia moniliformis*, 27. iii. 1979. Coll. R. K. Avasthi.

## ACKNOWLEDGEMENTS

We are deeply indebted to Prof. Nawab H. Khan, Head, Department of Zoology, for providing research facilities. Thanks are also due to Prof. S. Mashhood Alam for encouragement. One of us (R. K. Avasthi) is grateful to C.S.I.R., New Delhi, for financial assistance.

## REFERENCES

- ISHII, T. (1923): Observations on the Hymenopterous parasites of *Ceroplastes rubens* Mask., with descriptions of new genera and species of the subfamily Eucyrtinae. *Bull. Imp. Pl. Quarant. Stn. Yokohama* 3: 69-114.
- KERRICH, G. J. (1967): On the classification of the Anagyrini Encyrtidae with a revision of some of the genera (Hymenoptera: Chalcidoidea). *Bull. Brit. Mus. nat. Hist. (Ent.)* 20: 141-250.
- ROSEN, D. (1965): A new species of *Clausenia* Ishii (Hymenoptera: Encyrtidae) from Israel. *Proc. R. ent. Soc. Lond., (B)* 34: 61-64.